



# Workshop to Launch the IPPALC: Pacific Alliance and South America

**Antonio Fanelli**

Senior Advisor to the Global Relations Secretariat (OECD)

**Jorge Gálvez Méndez**

Economist of the Global Relations Secretariat (OECD)

**Anna Wiersma**

Analyst of Policies for Latin America and the Caribbean  
of the Global Relations Secretariat (OECD)

## Economic and Technical Cooperation

*Workshop to launch the Public Policy Index for MSMEs in Latin America and the Caribbean (IPPALC): Pacific Alliance and South America*

*Puerto Vallarta, Mexico*

*15 and 16 May 2017*

*SP/TLIPPMIPYMESALC: APS/Di N° 2-17*

Copyright © SELA, May 2017. All rights reserved.  
Printed in the Permanent Secretariat of SELA, Caracas, Venezuela.

---

The Press and Publications Department of the Permanent Secretariat of SELA must authorize reproduction of this document, whether totally or partially, through [sela@sela.org](mailto:sela@sela.org). The Member States and their government institutions may reproduce this document without prior authorization, provided that the source is mentioned and the Secretariat is aware of said reproduction.



# INTRODUCTORY SESSION

## Workshop to Launch the IPPALC: Pacific Alliance and South America

# Presentation Outline



**1. OECD SME Policy Index (SMEPI) – Introduction**

**2. Overview of Past IPPALC Development Process**

**3. Workshop Objectives**





# OECD SME Policy Index (SMEPI)








# SME Policy Index Objectives

- To compare SME policy across countries and time and measure progress on policy convergence at regional level;
- To assess the level of policy development across key dimensions;
- To identify strong and weak points in policy design and implementation at country level;
- To provide a tool to policy makers and stakeholders to monitor progress in policy implementation.



# SME PI regional applications and Partner Organisations

South East Europe	<b>2007</b> Western Balkans	<b>2009</b> Western Balkans	<b>2012</b> Western Balkans and Turkey	<b>2016</b> Western Balkans and Turkey	<b>2019</b> Western Balkans and Turkey	
The Middle East and North Africa	<b>2008</b> The Mediterranean and MENA	<b>2014</b> The Mediterranean and MENA	<b>2017</b> The Mediterranean and MENA			
Eurasia			<b>2012</b> Eastern Partner Countries	<b>2016</b> Eastern Partner Countries	<b>2019</b> Eastern Partner Countries	
Southeast Asia			<b>2014</b> ASEAN			
Latin America and the Caribbean					<b>2018</b> Latin America	

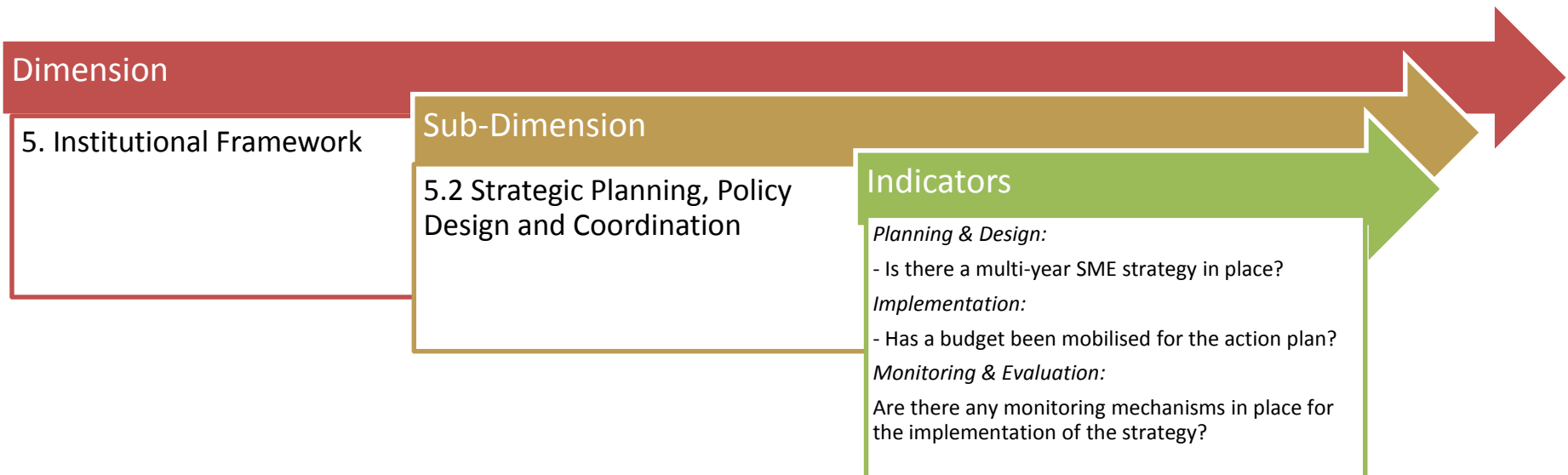
# Dimensions covered by the SME PI

Dimension	Western Balkans and Turkey	Eastern Partner Countries	Mediterranean Middle East and North Africa	ASEAN	Latin America
Entrepreneurial learning and women's entrepreneurship	•	•	•	•	
Bankruptcy and second chance for SMEs	•	•	•		
Institutional and regulatory framework for SME policy making	•	•	•	•	•
Operational environment for SMEs	•	•	•	•	•
Support services for SMEs and start-ups	•	•	•	•	•
Public procurement	•	•	•		
Access to finance for SMEs	•	•	•	•	•
Standards and technical regulations	•	•	•		
Enterprise skills	•	•	•		
Innovation policy for SMEs	•	•	•		•
SMEs in a green economy	•	•	•	•	
Internationalisation of SMEs	•	•	•	•	•
Social and inclusive enterprises				•	
Productivity, technology and innovation				•	
Associativity and productive articulation					•



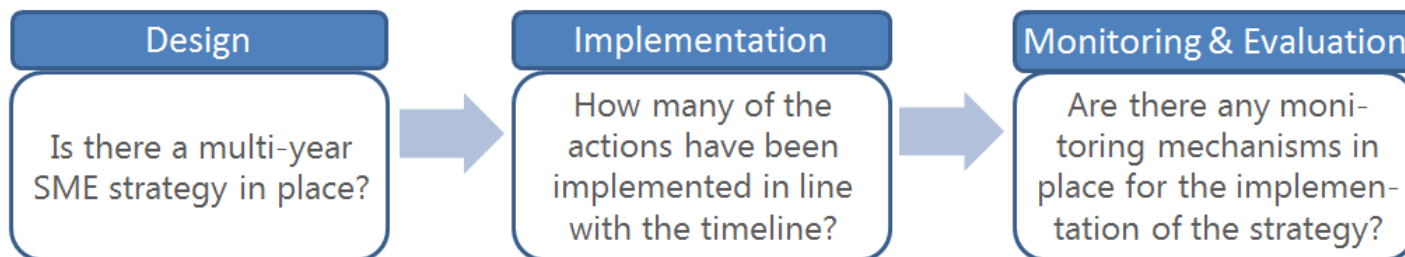


# Sub-dimensions and thematic blocks

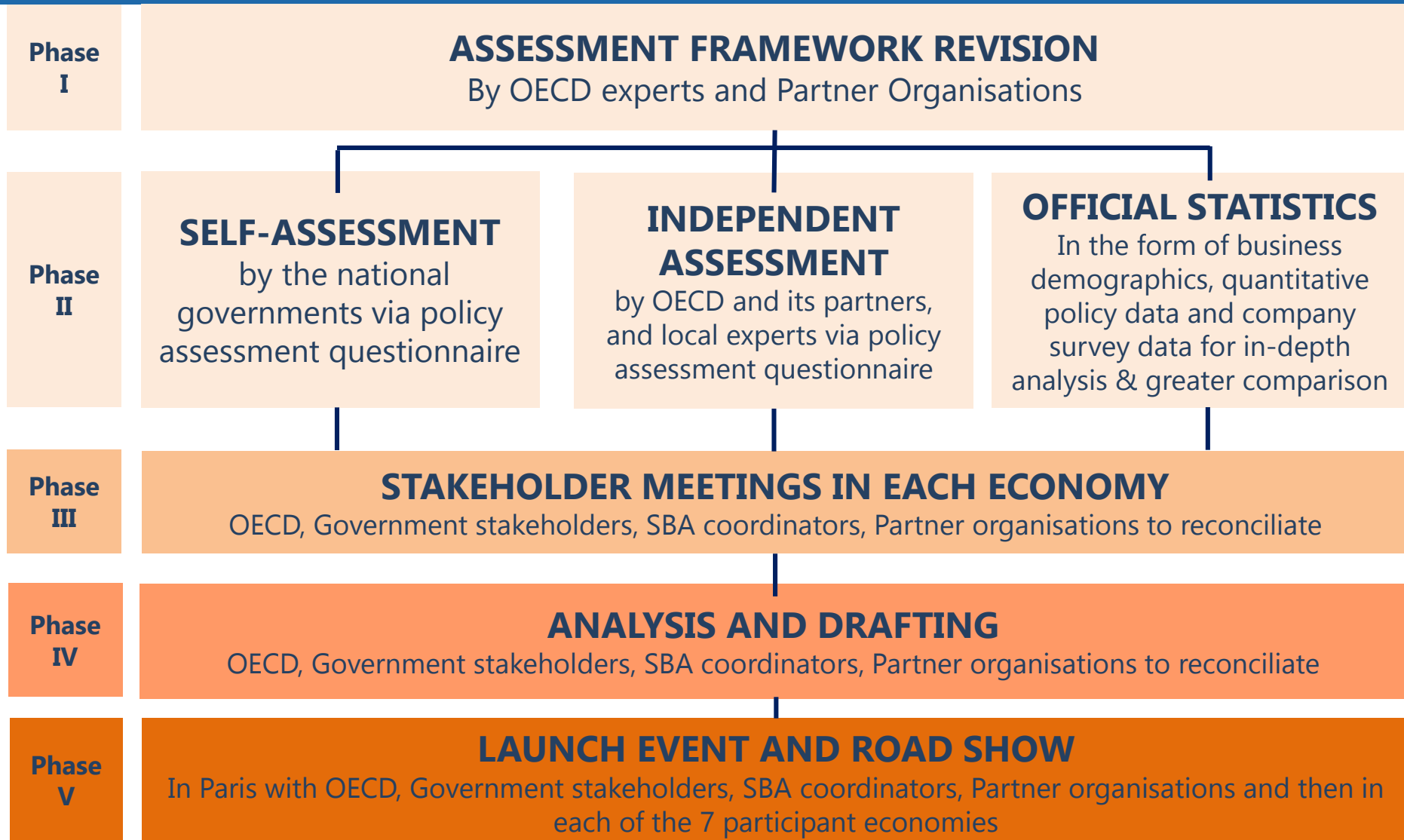


In order to be able to address systematic policy issues in a more detailed manner and enhance the depth of policy recommendations, some sub-dimensions have been split up into thematic blocks:

## Example: Institutional Framework



# SMEPI assessment: methodology and process



# Necessary Conditions

- A group of countries sharing the same broad views on SME policy and pursuing common policy goals defined by regional strategy, policy declaration, SME principles, etc.;
- A leading government institution in each country eager to lead the process and able to secure the support of other institutions and key stake holders;
- A partnership among international and regional organisations ready to contribute to the process;
- Availability of key SME statistics and openness by government institutions to provide data and information;
- Possibility to raise adequate funding.

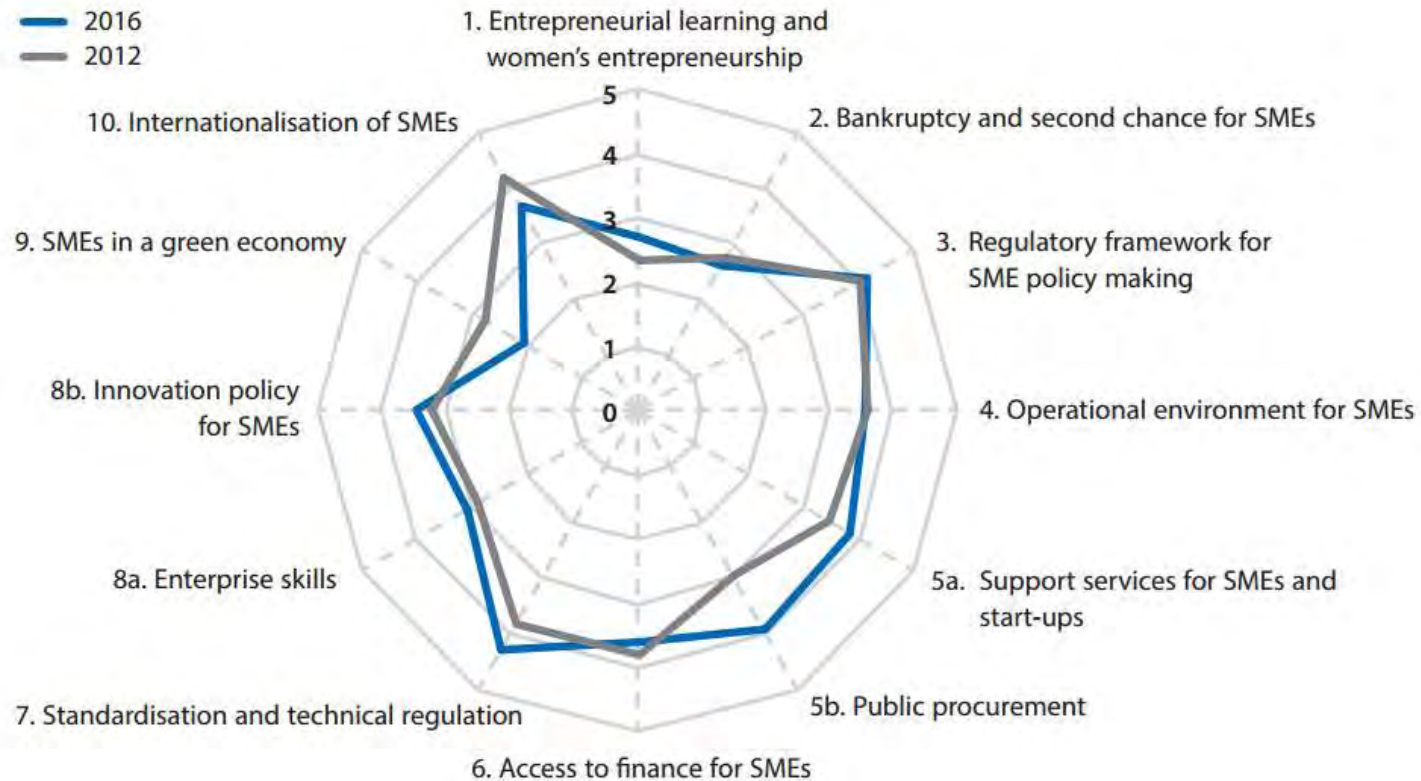


# Project Outputs

- **Final Publication**, with overall assessment per sub-group and specific country notes for each dimension
- Comparable **Benchmarking** and Identification of Strengths and Weaknesses
- **Policy Dialogue** – Creation of SME Network
- Basis for future country-specific and regional projects to address revealed priority policy areas (**implementation and technical-assistance**)



# SME PI scores (example of Serbia)



# Examples of how participating economies have benefited from the SME PI

- *Western Balkans and Turkey:* SME PI results are regularly incorporated into the EC Enlargement Strategy Papers and they have been used by participating economies and the EC to design technical assistance programmes. The SME PI results have been taken into account for the establishment of the Western Balkans Enterprise Development & Innovation Facility (EDIF). The findings of the assessments are also instrumental for preparation of annual Economic Reform Programmes in Western Balkans and Turkey.
- *Eastern Partner Countries:* All six countries have already developed or are currently finalising an SME development strategy based on the assessment results and recommendations contained in the SME PI.
- *Mediterranean, Middle East and North Africa:* SME PI has been used by individual economies (e.g. Morocco and Egypt) to regularly monitor the SME policy development. The results of the SME PI have been incorporated into the 2015 -2020 SME Development Strategy of Jordan.
- *ASEAN:* In the Philippines the SME Development Strategy was largely based on the findings from the 2014 ASEAN SME PI. Based on the result of the 2014 SME PI, ASEAN has established a regional task-force to improve company registration procedures.





# Overview of Past IPPALC Development Process



# Past Meetings



**Reunión Regional sobre el Estudio de Actualización del Índice de políticas públicas para PYMES en América Latina y el Caribe**

---

San José, Costa Rica, 8 de julio de 2016

**Documento base:**

[Estudio de actualización del Índice de Políticas Públicas para Pymes en América Latina y el Caribe \(IPPPALC\)](#)





# Past Meetings



SISTEMA ECONÓMICO  
LATINOAMERICANO  
Y DEL CARIBE



OCDE  
MEJORES POLÍTICAS  
PARA UNA VIDA MEJOR



ampyme  
AUTORIDAD DE LA MICRO,  
PEQUEÑA Y MEDIANA EMPRESA

**“Taller de Implementación del Índice de Políticas Públicas para Mipymes en América Latina y el Caribe (IPPALC)”**

**Ciudad de Panamá, Panamá, 20 y 21 de septiembre de 2016**



# Meeting follow-up

- Receive letters of interest from pilot countries
- Form regional groups
- Identify lead institution in each country
- Establish a partnership among international and regional institutions concerning roles and financing



# Overall Snapshot

## 4 sub-projects

Pacific Alliance



South America



Central America



Caribbean



## Timeline: 2017-2019

March 2017-mid 2018

March 2017-mid 2018

September 2017 – Dec 2018

Capacity Building Workshop and Technical Assistance: 2017-2018

SME Policy Index Assessment: mid 2019- 2020

## 1 Group of Experts

Latin American and Caribbean Economic System (SELA)



UN Economic Commission for Latin America and the Caribbean (ECLAC)



Inter-American Development Bank (IDB)



Development Bank of Latin America (CAF)



# Role of the National Coordinator

The Country Coordinator will support with :

- identifying the interlocutors in relevant ministries and agencies in your country and engaging them in the project;
- collecting data on the SME Policy Index indicators;
- organizing national meetings;
- helping on other coordination tasks to take the project forward as requested, under the guidance of the OECD team;
- providing feedback on the developed country chapter; and
- regular update on the state of the process.



# List of National Coordinators

## Chile

Mr. Esteban Rojas Pinochet  
Asesor del Gabinete Ministerial  
Ministro de Economía, Fomento y Turismo

Abel Benítez  
División Pymes y Representante del Chile en PA Grupo Técnico PYMEs  
Ministerio de Economía, Fomento y Turismo

## Colombia

Doctora Sandra Acero  
Ministerio de Comercio, Industria y Turismo

Mireya Bermeo Álvarez  
Representante del Colombia en PA Grupo Técnico PYMEs  
Ministerio de Comercio, Industria y Turismo

## Mexico

Lic. Adrián Carrillo Acuña  
Director del Instituto Nacional del Emprendedor

Iván Ornelas  
Representante del México en PA Grupo Técnico PYMEs

## Peru

Sr. Mauricio Moscoso  
Director General de la Dirección General de Desarrollo Empresarial  
Ministerio de la Producción

Lizandro Gutiérrez  
Actual Coordinador y Representante del Perú en PA Grupo Técnico PYMEs  
Ministerio de Comercio Exterior y Turismo

## Argentina

Lic. María Agustina Briner  
Directora Nacional de Competitividad PyME

Lic. Nicolás Javier Puebla  
Economista Senior

## Ecuador

Mr. Paúl Pereira  
Subsecretario de Mipymes y Artesanías

Eco. Juan Pablo Gencón  
Coordinador General de Estudios

## Uruguay

Sr. Rafael Mendive  
Director de la Dirección Nacional de Artesanías, Pequeñas y Medianas Empresas  
Ministerio de Industria Energía y Minería (MIEM)

Consejero Martín Álvez  
Director de Organismos Internacionales Económicos  
Ministerio de Relaciones Exteriores



# Meeting follow-up

- Form analytical team and conduct elaboration of the detailed assessment grid and data collection questionnaire
- Arrange kick-off workshop with lead country institutions and partners to formally define conceptual framework



# Proposed Dimensions for Assessment in LAC

## PROPOSED IPPALC DIMENSIONS

- 1. Institutional Framework**
- 2. Operational Environment  
/Simplification of Procedures**
- 3. Access to Finance**
- 4. MSME Development Services  
and Public Procurement**
- 5. Innovation, and Technology**
- 6. Productivity and Association-  
enhancing Measures**
- 7. Access to Market and  
Internationalisation of MSMEs**





# Workshop Objectives





# Objectives

- Review the proposed content for each dimension and sub-dimension of the proposed assessment framework
- Agree on proposed modifications/additions
- Ensure that participants have a clear understanding and agree on the next steps in the IPPALC process
- Organise the self-assessment and the independent assessment phase



